

Coos County Board of Commissioners

ACU-23-074-FP-23-012 Work Session

Tuesday, March 5, 2024

1:30-3:30 p.m.


Owens Building Conference Room

201 North Adams Street

Coquille, Oregon 97423

Work Session Opening

- Jill Rolfe
- opening comments
- process & protocols



BEAVER SLOUGH
DRAINAGE DISTRICT



Today's Presentation

BSDD – Fred Messerle, District Manager

Agriculture - Mark Isenhart, Jeff Messerle – Landowners

Biological – Mike Gray, ODFW, Helena Linnell, CIT

Coquille Valley Wildlife Area – Stuart Love, CVWA Manager

Monitoring Project Results – CoqWA – Julie Huff

Project Facilitators – Coos SWCD - Caley Sowers

Stakeholder Perspective – Steve Denney

BSDD Role

Manage & Maintain District Infrastructure

Administrate the District Water Management Plan (DWMP)

Facilitate and coordinate with landowners and other stakeholders to meet goals and objectives for individual parcels

Focus Point:

Managing/Moving

Water

On the

Landscape

An aerial photograph of a rural landscape. The foreground is dominated by a dense forest of evergreen trees. Beyond the forest, there are several large, flat fields, some of which are green and others brown, suggesting different stages of agricultural use or seasonal changes. A river or stream flows through the middle ground, winding between the fields. In the background, there are rolling hills and mountains under a clear sky. The overall scene is a mix of natural and agricultural elements.

Winter Lake Phase III

Working Lands Implementation

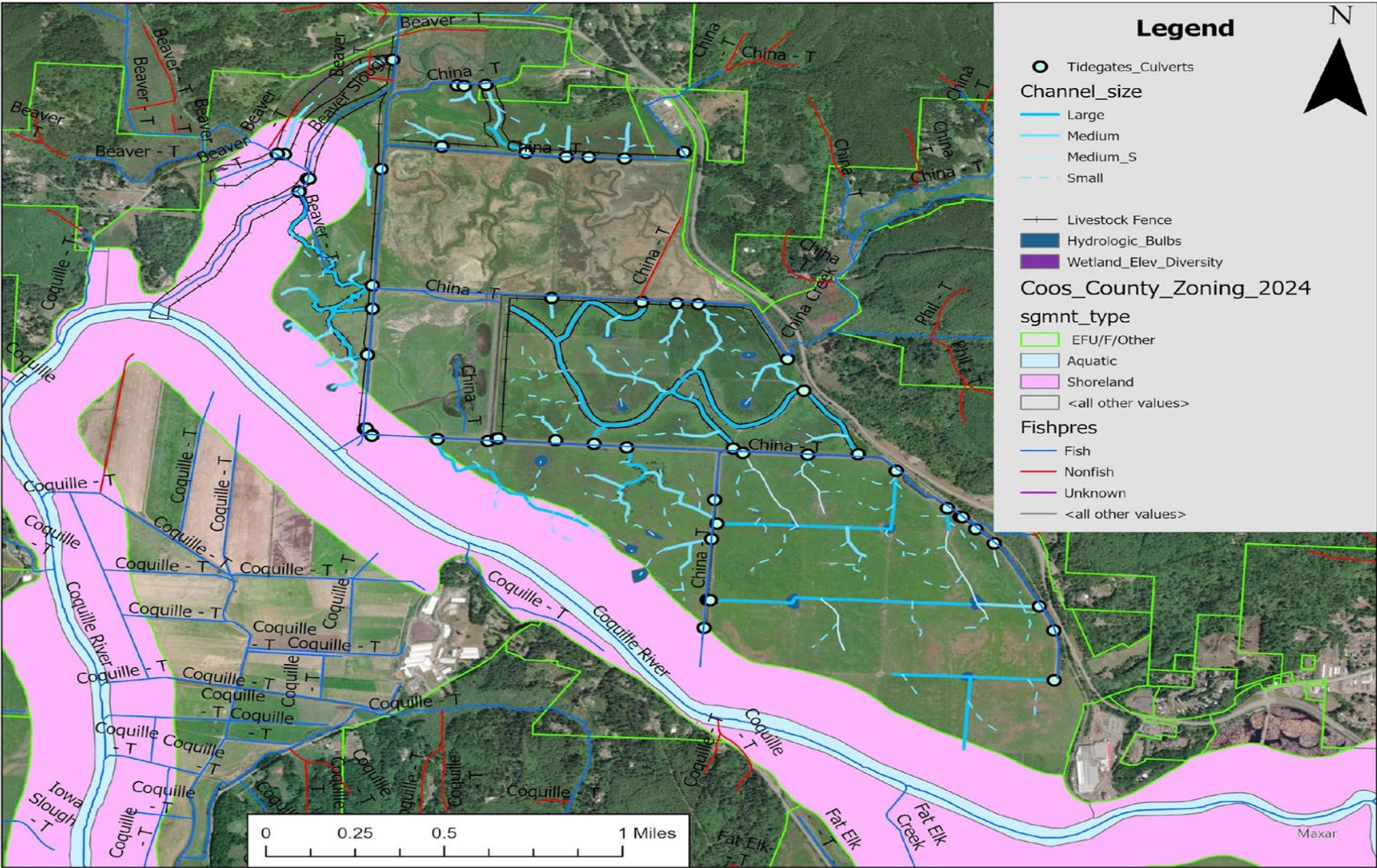
System Infrastructure Maintenance & Improvements

1848 ----- 1948 -----2048



1848 - Oregon became a territory. Section 12 of the Territorial Constitution declared that rivers and streams supporting salmon shall not be dammed or otherwise obstructed unless fish passage is provided.

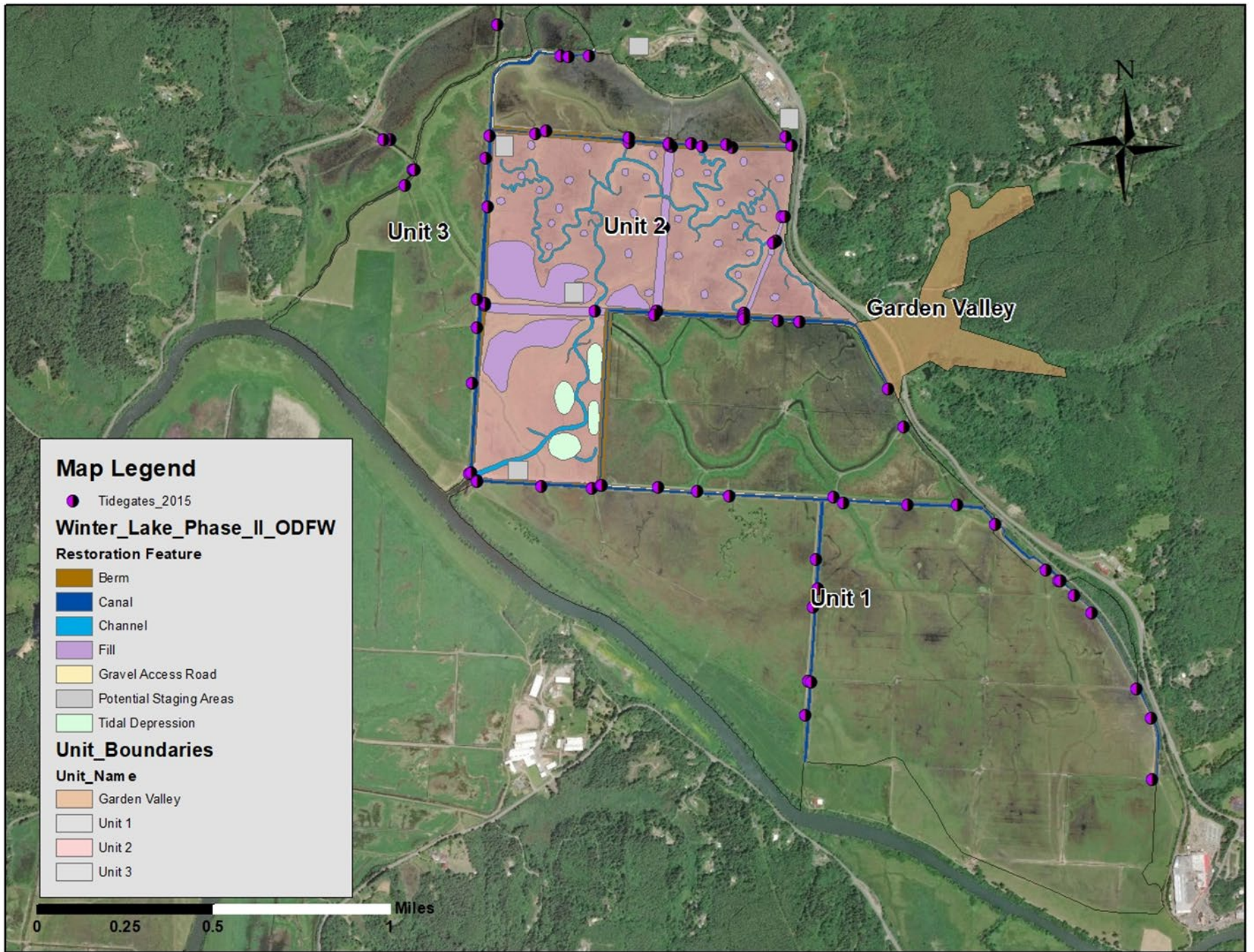
EFU/CREMP



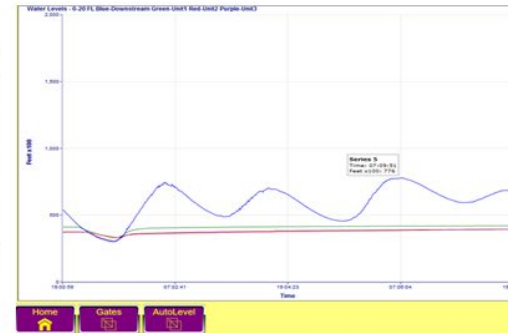
ECONOMICS 101

- i. Significant impact of natural resources to the local economy
- i. Agricultural operations will not generate enough income to pay for the infrastructure necessary to meet statutory fish passage and habitat requirements.





Infrastructure completed.



China Camp Creek - Tidal Gate Control System Summary

Current Water Levels		Graph
Water Level - Downstream	Falling 6.78 ft	
Water Level - Unit 1	4.20 ft	
Water Level - Unit 2	3.95 ft	
Water Level - Unit 3	3.94 ft	
Water Level - N. Canal Bridge	3.93 ft	
Water Level - Beaver Creek	4.57 ft	

Unit	Mode	Unit Target	Gate 1A	Gate 1B	Gate 2A	Gate 2B	Gate 2C	Gate 2D
Unit 1 East	OFF	0.00 ft	0.07 ft	0.01 ft				
Unit 2 Middle	OFF	0.00 ft	0.01 ft	0.22 ft	-8.05 ft	-8.42 ft		
Unit 3 North	GATE POSITION	0.00 ft	8.10 ft					

Battery Voltage: 13.03 V
 GWS DC Power: 13.12 V





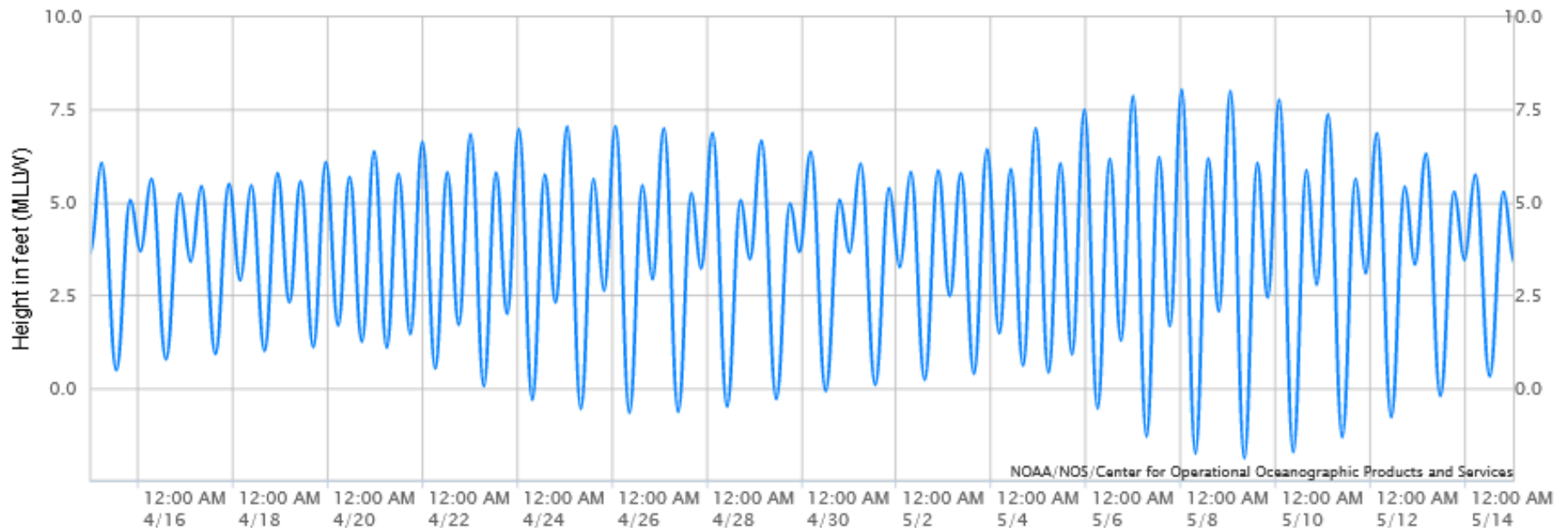
Time & Tides

NOAA/NOS/CO-OPS

Tide Predictions at 9432373, BANDON, COQUILLE RIVER OR

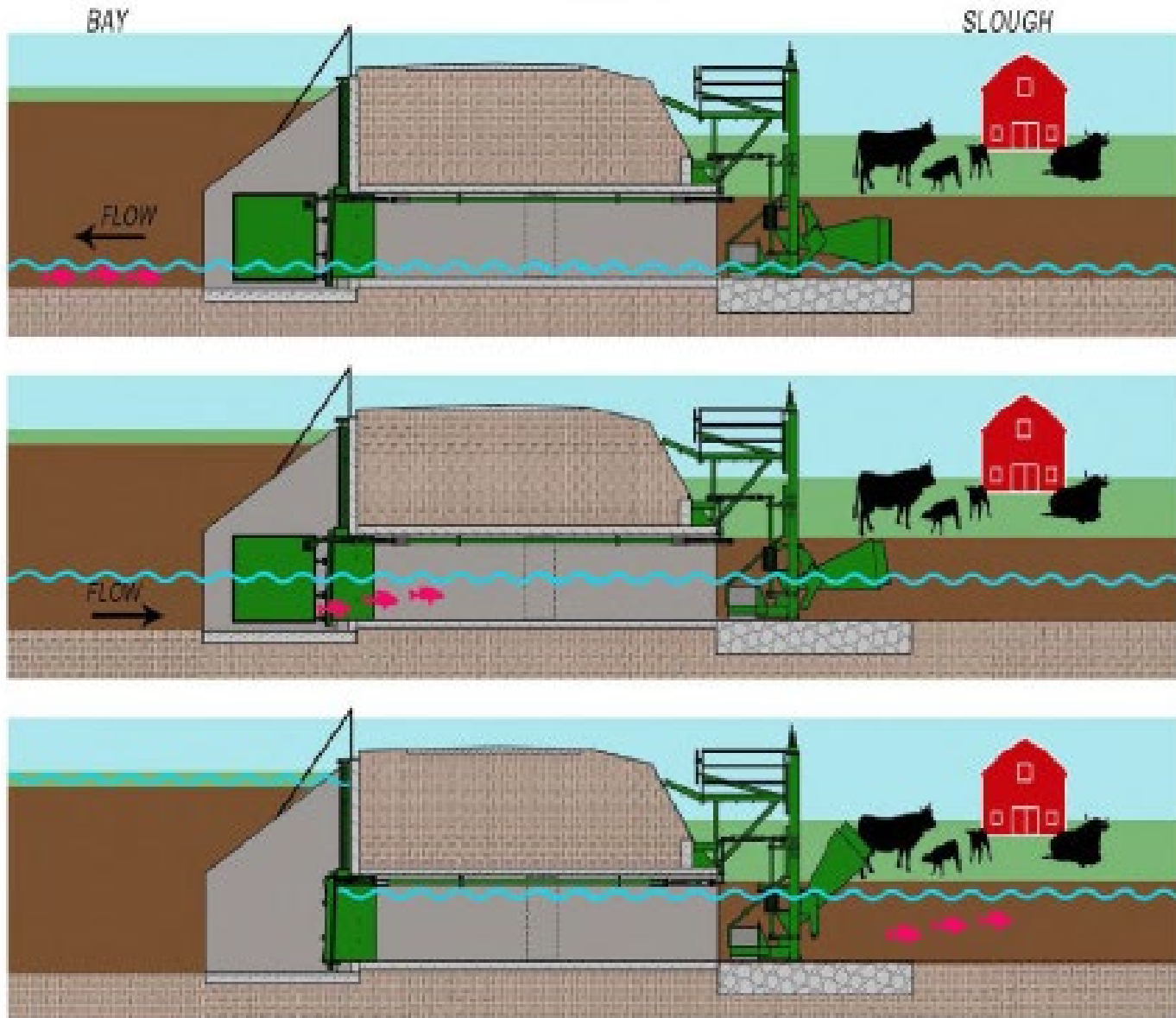
From 2024/04/15 12:00 AM LST/LDT to 2024/05/14 11:59 PM LST/LDT

Subordinate Station | Ref. Station (Charleston 9432780) | Time offsets (high: -5 min. low: 2 min.) | Height offsets (high: +0.92 ft. low: +0.94 ft.)

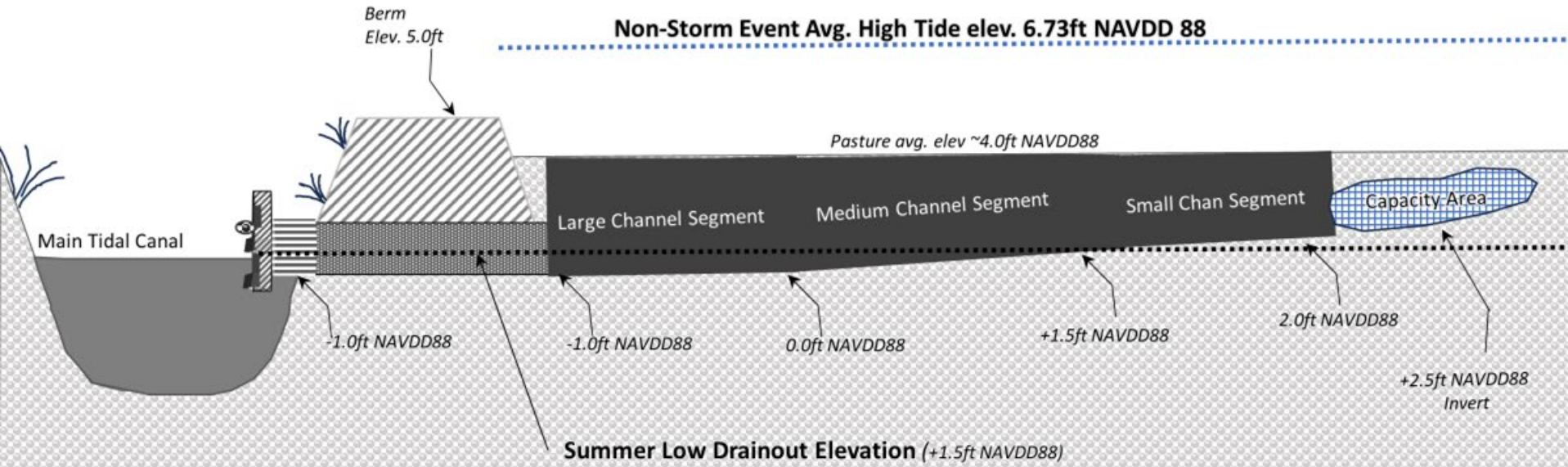


Note: The interval is High/Low, the solid blue line depicts a curve fit between the high and low values and approximates the segments between.
Disclaimer: These data are based upon the latest information available as of the date of your request, and may differ from the published tide tables.

MUTED TIDE



Winter Lake Phase III
Channel Rise/Slope Cross-Section



404 JPA permit, ATTACHMENTS ENGINEERING

i. Attachments

- 1. A_Figures and Photos**
- 2. B_Project Actions_Design_Yardages**
- 3. C_WinterLakell_HydroAssess**

ii. Mimic natural conditions

iii. Engineered project components

iv. Eliminate ponding

v. Enhance water quality





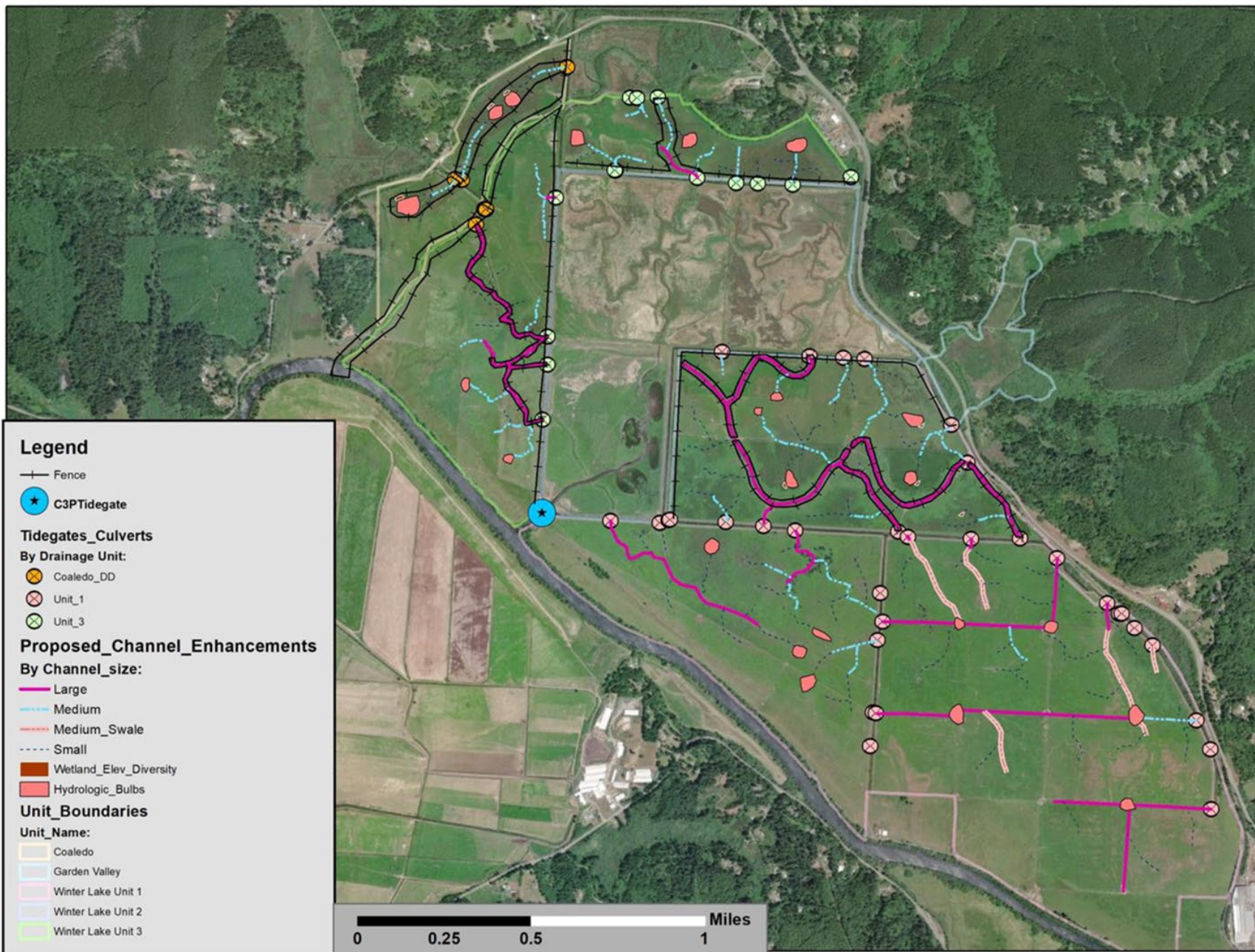


Figure 19. Winter Lake Phase III Proposed Channel Enhancements

Project Activities

- a. Rebuild the interior infrastructure to maximize capacity and management of water over the landscape.
 - i. Canals,
 - ii. Culverts
 - iii. Bridge
 - iv. Water control gates
 - v. Side Channels
 - 1. Type 1
 - 2. Type 2
 - 3. Type 3
 - 4. Hydrologic bulbs
 - vi. Berm Repair
 - vii. Off channel watering system
 - viii. Cattle Crossings
 - ix. Dredge spoils distribution.
 - x. Vegetation
 - xi. Other

Post Project

a. Provide for system maintenance over time.

a. Adaptive Management

.

AGRICULTURAL IMPACT

- These are legacy operations that contribute to the local economy
- Our investment is at risk
- System is plugged and not functioning
- Drainage is negatively impacted
- Irrigation is inefficient
- Access is restricted (for livestock and farm equipment)

PLUGGED CHANNEL





CROSSING

PERCHED CULVERT



BERM REPAIR



Coquille Valley Wildlife Area

-Stuart Love





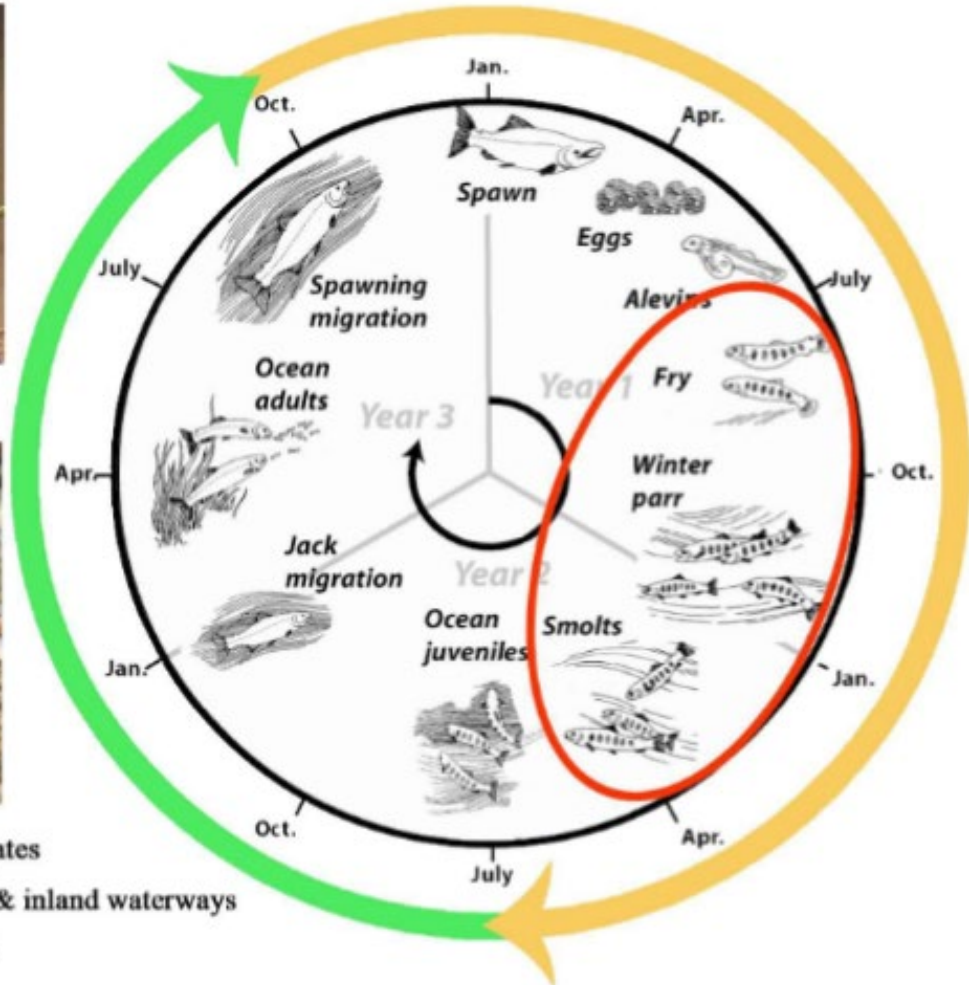


Oregon Dept. of Fish & Wildlife/ Coquille Indian Tribe

-Mike Gray, District Fish Biologist (ODFW)

-Helena Linnell, Environmental Biologist and Planner (CIT)

Coho Salmon Life Cycle



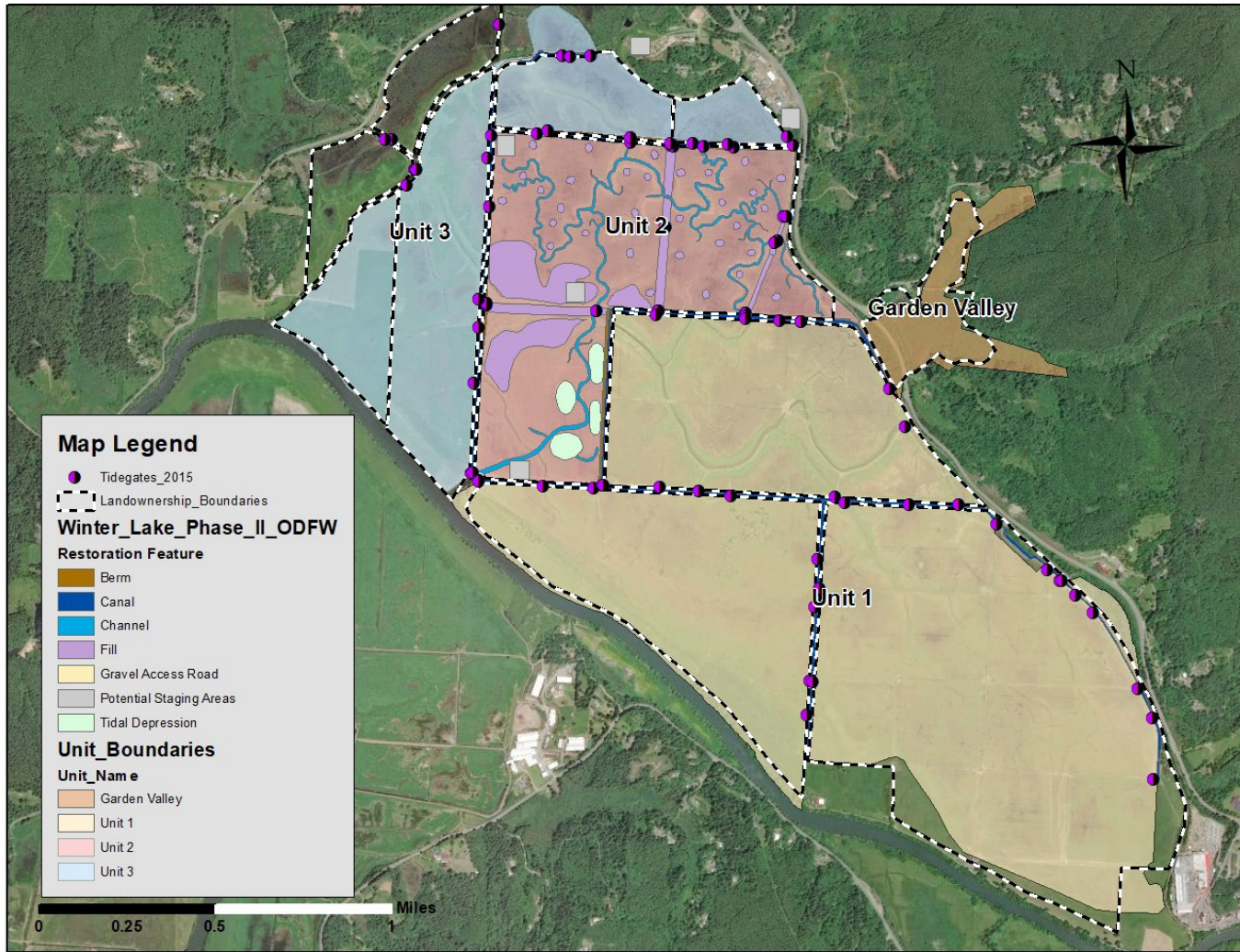
- Lifecycle time spent within tidegates
- Lifecycle time spent in estuaries & inland waterways
- Lifecycle time spent in the ocean

**Coho—Winter Lake
residence**



Coho—River captured









Coos & Coquille Basins Technical Support Organizations



Caley Sowers
District Manager
Coos Soil & Water Conservation District
(541) 396-6879
info@coosswcd.org

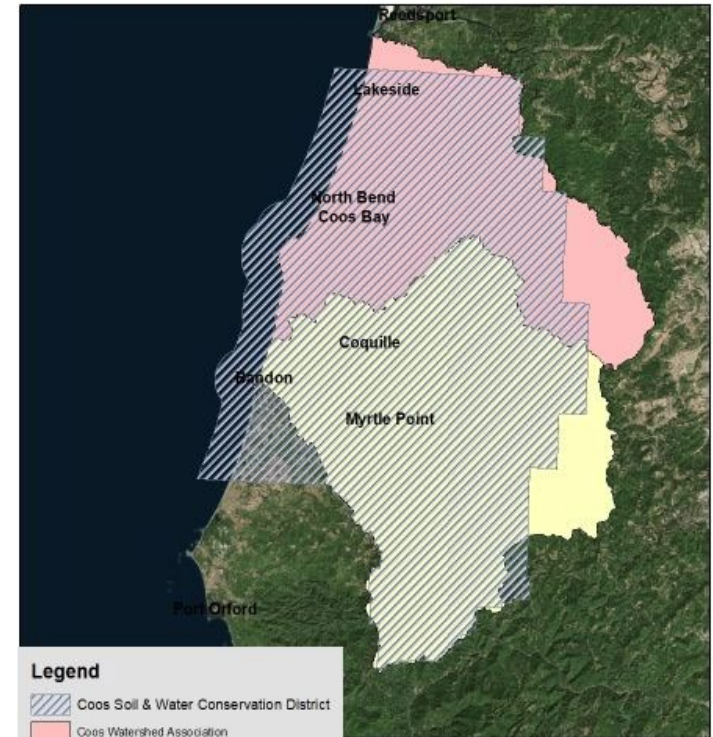


Leah Corral
Executive Director
Coquille Watershed Association
(541) 396-2541
director@coquillewatershed.org



Haley Lutz
Executive Director
Coos Watershed Association
(541) 888-5922 Ext 302
hlutz@cooswatershed.org

Coos County Tidegate Technical Service Providers Geographic Service Area



0 12.5 25 50 Miles





Winter Lake Water Quality Monitoring
-Julie Huff, Monitoring Coordinator,
Coquille Watershed Association

- Water Quality

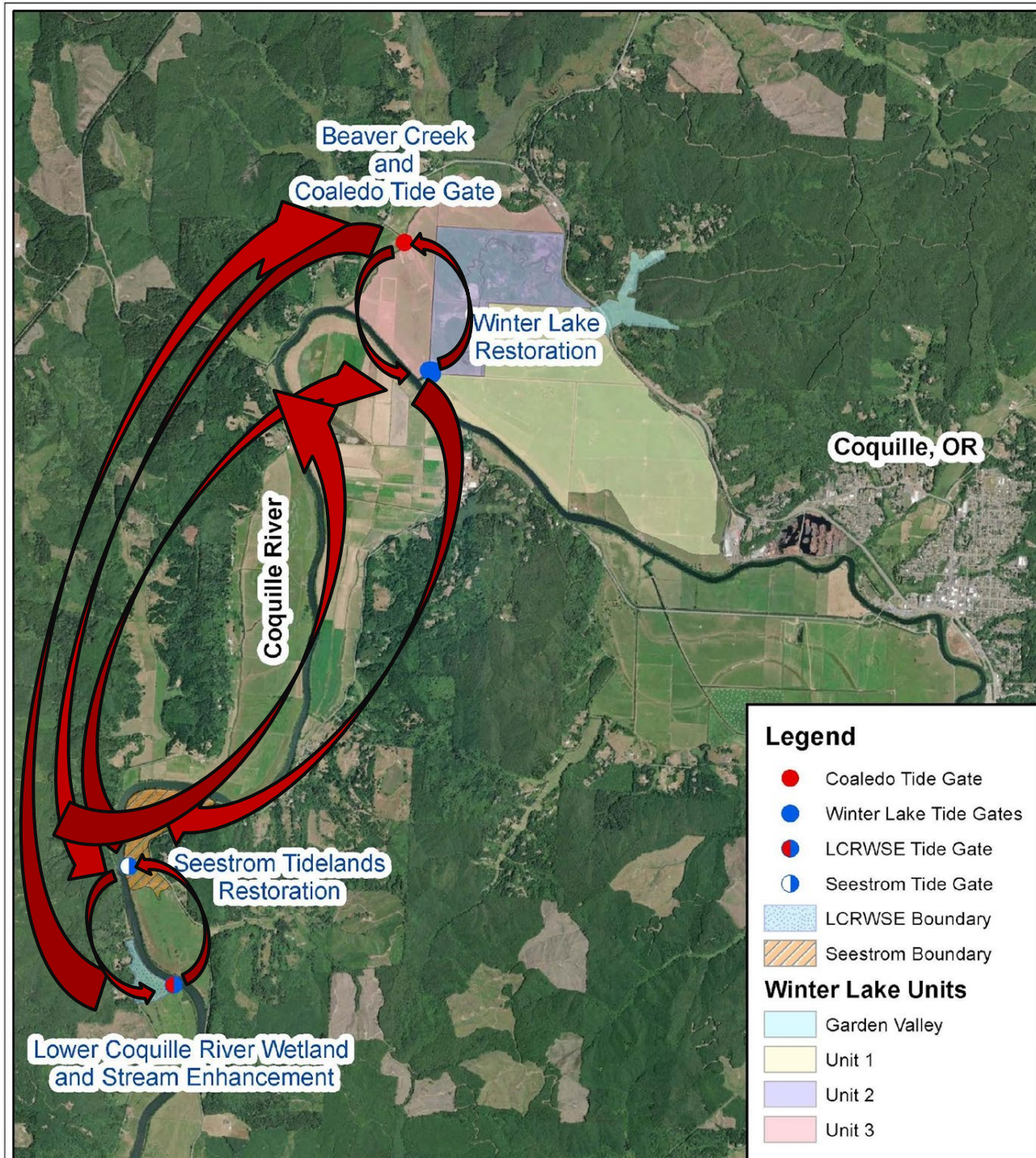
- Excess nutrients, pathogens (E. coli) from manure in surface water
- Dissolved Oxygen





Juvenile coho usage

- 25% of tagged juvenile coho are detected at multiple sites
- Juvenile coho are highly mobile!
- Agricultural land with improved fish habitat is beneficial for our county



Stakeholder Perspective:

Steve Denney

In Conclusion

- a. Thank You for opportunity to present project information.**
- b. Stewardship Importance**
- c. Request for ACU approval by staff**
- d. Is this the best use of limited resources for the community as a whole?**
- e. Request support in future for projects, permitting reform, etc.**

Questions & Clarifications

